

UNIVERSIDAD NACIONAL DE MÚSICA

Sección de Estudios Preparatorios

**Programa ESCOLAR
(de 15 a 17 años)**

**PRUEBAS TIPO
Admisión 2020**

**Prueba tipo n° 1 de AUDIOPERCEPTIVA
Prueba tipo n° 1 de LECTURA**

ADMISIÓN 2020

Prueba tipo nº 1 de AUDIOPERCEPTIVA

1. Dictado de Intervalos Melódicos.

- a) 2m 2M 3M 4J 5J 8J
- b) 2m 2M 3M 4J 5J 8J
- c) 2m 2M 3M 4J 5J 8J
- d) 2m 2M 3M 4J 5J 8J
- e) 2m 2M 3M 4J 5J 8J
- f) 2m 2M 3M 4J 5J 8J

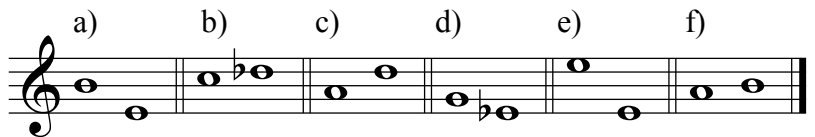


Diagram illustrating the interval dictation exercise. The musical notation shows a sequence of notes on a treble clef staff, corresponding to the intervals listed in the options (a) through (f).

2. Dictado Rítmico.



Diagram illustrating the rhythm dictation exercise. The musical notation shows a sequence of notes on a treble clef staff, corresponding to the rhythmic patterns listed in the options.

3. Dictado Melódico.

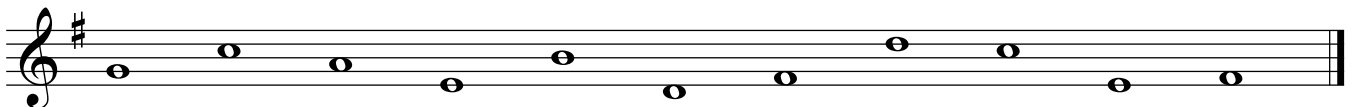


Diagram illustrating the melody dictation exercise. The musical notation shows a sequence of notes on a treble clef staff, corresponding to the melodic patterns listed in the options.

4. Dictado Rítmico - Melódico.



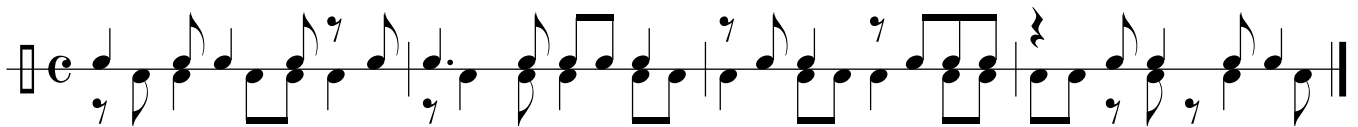
Diagram illustrating the rhythm-melody dictation exercise. The musical notation shows a sequence of notes on a treble clef staff, corresponding to the rhythmic and melodic patterns listed in the options.

Prueba tipo nº 1 de LECTURA (ESCOLAR - de 15 a 17 años)

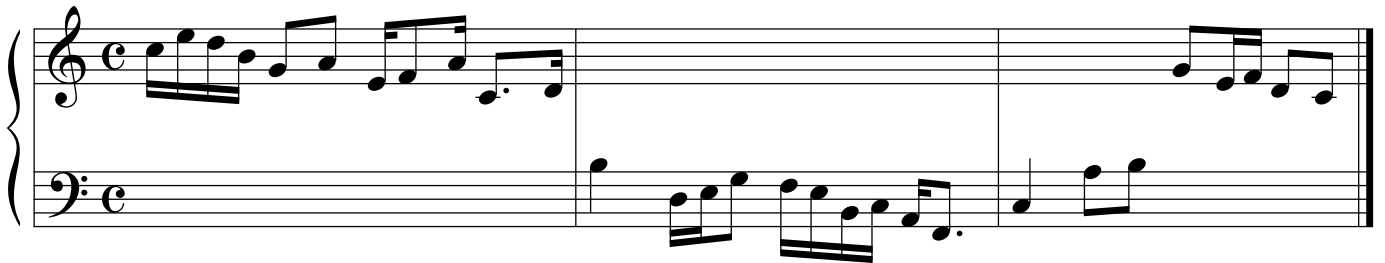
1.- Lectura Rítmica a Una Voz



2.- Lectura Rítmica a Dos Voces



3.- Lectura Hablada



4.- Lecturas Entonadas

